



CIVICS 101

Ann M. Stillman
Director of Public Works
October 9, 2024

COUNTY OF SAN MATEO



Department of Public Works About Us



**WHO WE ARE
& WHAT WE DO**

COUNTY OF SAN MATEO



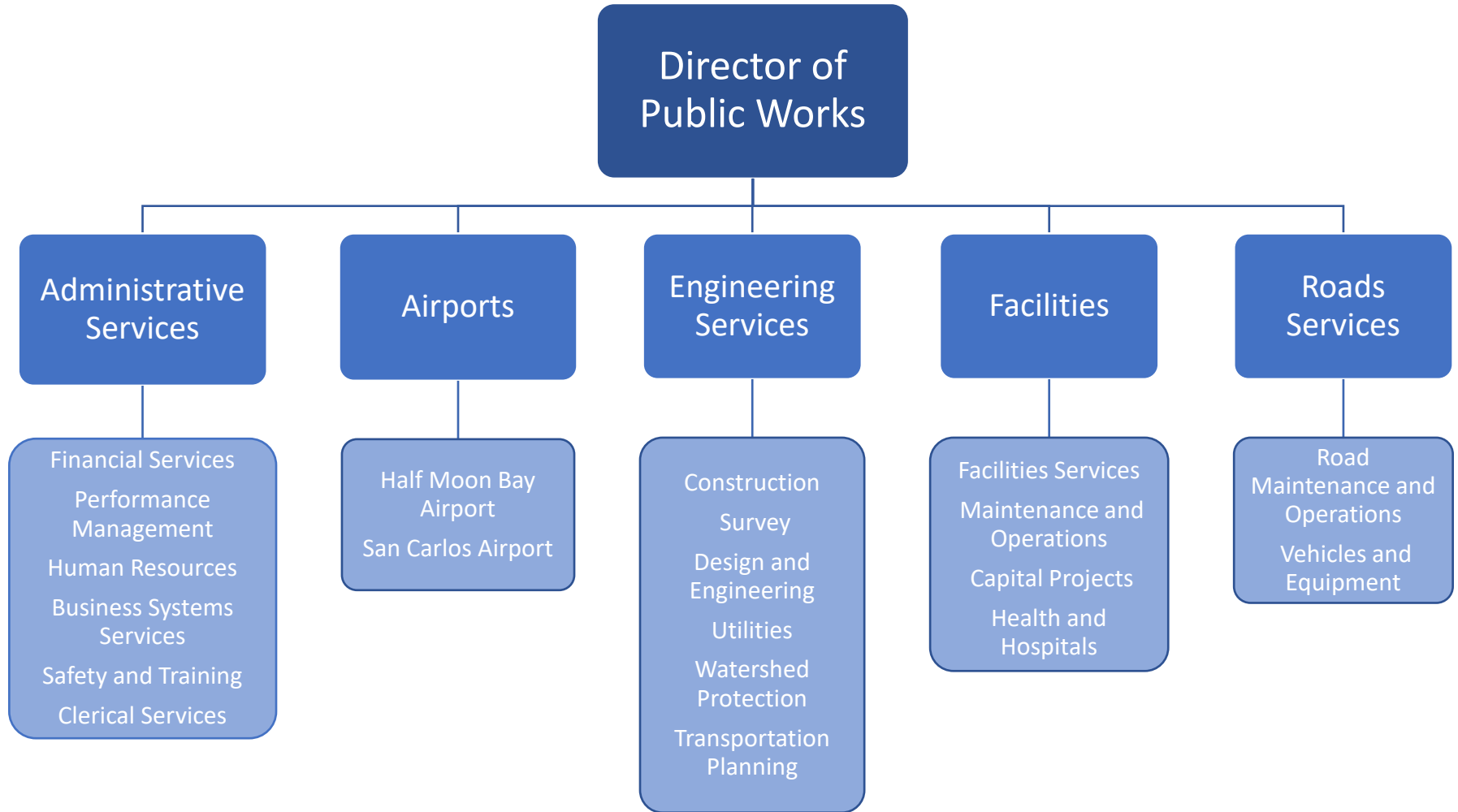
Department of Public Works

Mission Statement

The Department of Public Works (DPW) plans, designs, constructs, operates and maintains facilities and equipment that are safe and accessible to the general public and County employees.

Department of Public Works

Divisions



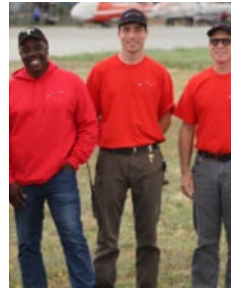
Department of Public Works CARE for Customers & Employees



COUNTY OF SAN MATEO



Department of Public Works DPW Employees



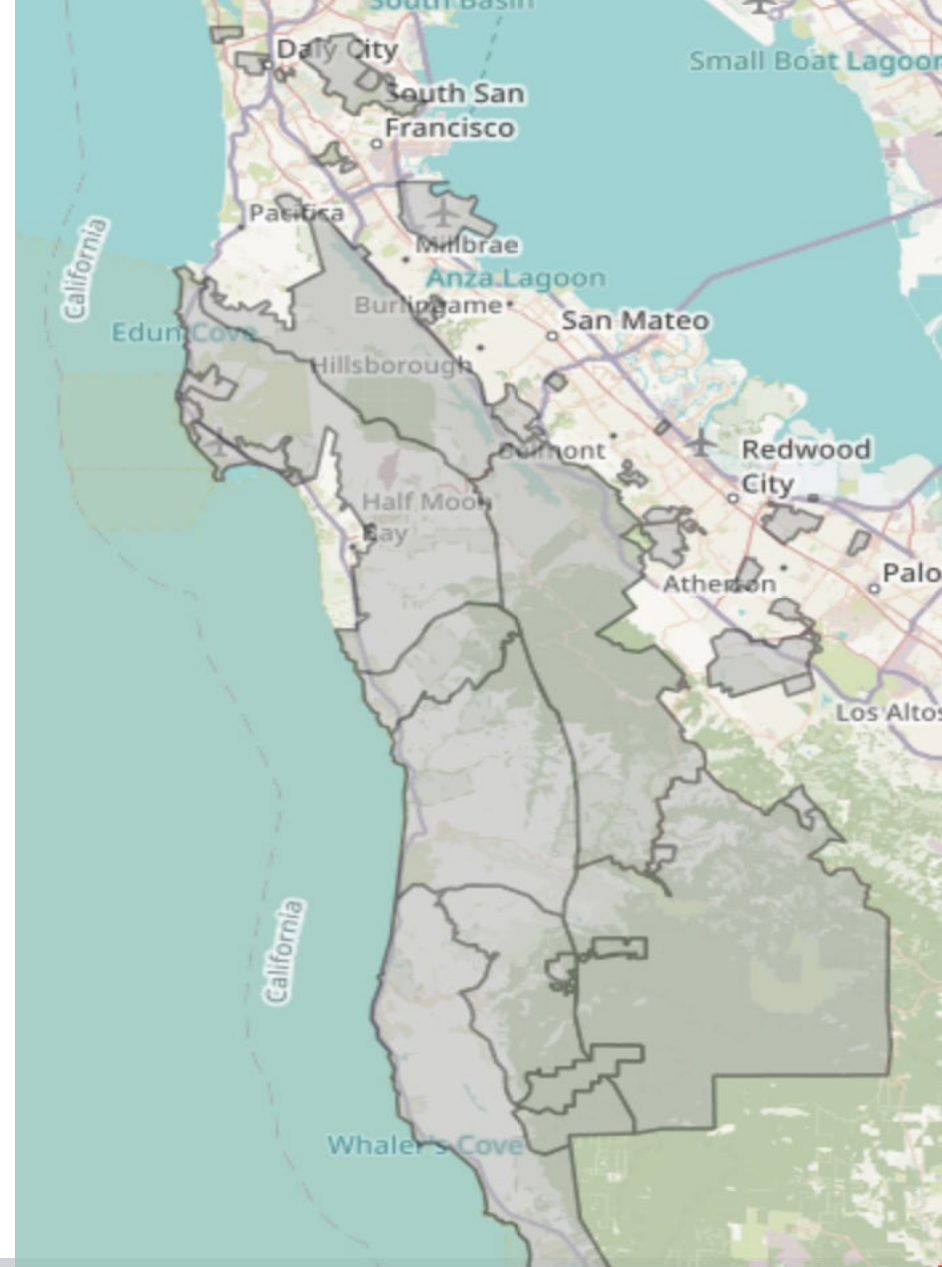
For current DPW job opportunities, please visit: www.jobs.smcgov.org

COUNTY OF SAN MATEO



Department of Public Works County of San Mateo Unincorporated Areas

- Broadmoor
- Burlingame Hills
- Devonshire
- El Granada
- Emerald Lake Hills
- Fair Oaks
- Highlands/Baywood Park
- La Honda
- Ladera
- Loma Mar
- Los Trancos Woods/Vista Verde
- Menlo Oaks
- Montara
- Moss Beach
- North Fair Oaks
- Palomar Park
- Pescadero
- Princeton
- San Gregorio
- South Coast/Skyline
- Sequoia Tract
- Skylonda
- Stanford Lands
- West Menlo Park



Department of Public Works

Road Services



- 316 miles of County maintained roads
- 643 lane miles of County maintained roads
- Stormwater facilities
- Roadway vegetation maintenance
- Traffic control devices
- Right of way management
- Motorpool services
- Vehicle and equipment acquisition & replacement
- Vehicle & equipment preventative maintenance & repair

Department of Public Works

Road Services

Storm Preparation,
Response & Repairs



- Emergency preparedness & response
- Emergency repairs & projects

Department of Public Works

Road Services

Project Priorities & Innovations



- Storm repairs
- Evaluating fleet transition to electric & hybrid vehicles
- Safety, accessibility & mobility improvements
- Use of innovative applications in transportation network projects



Department of Public Works Engineering & Resource Protection Services

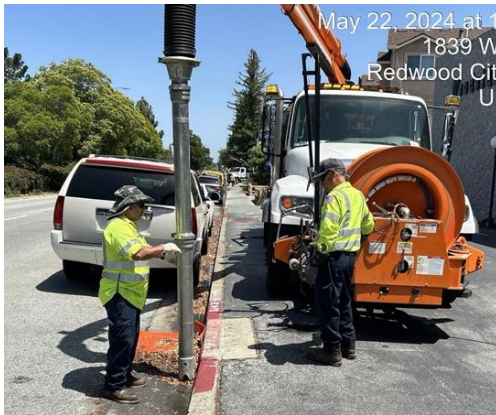


- Project Development
- Design and Construction Management
- County Surveyor
- County Maps
- Utilities and Watershed Protection
- Transportation Planning



Department of Public Works Engineering & Resource Protection Services

Project development &
design, and construction
management



- 3 County Service Areas (Water and Streetlights)
- 8 Drainage Maintenance Districts
- 10 Sanitary Sewer Districts
- 10 Street Light Districts
- O&M Support Services to One Shoreline

Department of Public Works Engineering & Resource Protection Services



Department of Public Works

Facilities Services & Capital Projects



Facilities, Maintenance & Operations

- 4,008,327 SF of facilities
- 40+ acres of landscape & parking areas

Building Services

- 73 County facilities
- 1,767,000 SF of facilities

Correctional Facilities

- Maguire & Maple Street correctional facilities

Health & Hospital

- 707,327 SF of medical facilities

Construction Services

- Professional craft services

Capital Projects

- County facilities improvement, repair & replacement projects

Department of Public Works

Facilities Services & Capital Projects



Renovation of the EPA Government Center Building

- Departmental improvements to library space was coordinated with the building systems upgrades



- New building systems being installed throughout the facility including all new mechanical room and equipment at the penthouse.
- New drop ceilings, lighting, flooring, and paint in most building spaces

Department of Public Works Facilities Services & Capital Projects

Working behind the scenes to support County and community facilities & infrastructure



- Emergency storm response: providing generators for community facilities & pumps to prevent flooding
- HVAC, lighting refrigeration, carpentry, painting, parking control, and more
- Capital Projects team conducts repair, improvement and replacement projects at County facilities

Department of Public Works Facilities Services & Capital Projects



Department of Public Works **Administrative Services**

- Fiscal Services
- Performance Management
- Business Systems Services
- Clerical Services
- Human Resources
- Safety and Training

Department of Public Works

Airport Services



Half Moon Bay Airport



San Carlos Airport

Department of Public Works

Airport Services

Recently Completed Projects

- San Carlos Airport Runway & Connector Taxiways Pavement Rehabilitation (FAA \$12.5M)
- Half Moon Bay Airport Runway Pavement Preservation (FAA \$500k)

Current Projects

- San Carlos Airport Security & Access Control
- San Carlos Airport Entrance Sign & Landscaping

Upcoming Projects

- Half Moon Bay Airport Airfield Electrical Vault & Generator – Construction (FAA \$1.4M)
- San Carlos Airport Taxiway Reconfiguration – Design (FAA \$300k)



Department of Public Works
**Project Sampling &
Recently Completed Projects**



Department of Public Works Engineering & Resource Protection Services

Reimagine Flood Park Project – Phase 1



Department of Public Works

Engineering & Resource Protection Services

Santa Cruz and Alameda de las Pulgas Improvements Project



Department of Public Works Engineering & Resource Protection Services

2023 Winter Storms: 2180 Higgins Canyon Road Slip-Out Repair



Department of Public Works Facilities Services & Capital Projects

East Palo Alto City Hall Improvements



New rooftop mechanical systems installation creating an all-electric building



Department of Public Works

Cost Measures



**LET'S TALK
ABOUT MONEY**

Department of Public Works

Project Costs

Roads

- \$7,332 per mile to maintain a road
- \$59,176 per lane mile sealed
- \$415,128 per lane mile resurfaced
- \$1,367,360 per lane mile reconstructed

Sewer

- \$6,359 per mile of sewer main for scheduled maintenance

Vehicle

- \$2,832 per non-patrol vehicle maintenance
- \$5,343 per patrol vehicle maintenance

Department of Public Works

FY 2023-25 Budget Overview

Department Budget	FY 2023-24	FY 2024-25
Total	\$266,095,351	\$207,190,433

Capital Projects Budget	FY 2023-24	FY 2024-25
Total	\$122,471,680	\$25,728,827



Department of Public Works



**DPW
WANTS YOU TO
KNOW...**

COUNTY OF **SAN MATEO**



Department of Public Works

Storm Preparation Tips



- Avoid piling yard waste on your property where it could wash into storm drains.
- Use a rake or broom to remove leaves and debris that may collect on the tops of storm drains & place the material in your yard waste container.



- Clean gutters & downspouts annually to ensure a well-flowing drainage system.
- Direct flows from downspouts away from your foundation, without discharging flows to adjacent properties.

Department of Public Works

Transportation Safety Tips

DRIVER SAFETY TIPS

PEDESTRIAN SAFETY TIPS

BICYCLE SAFETY TIPS



**Let's all get
there safely!**

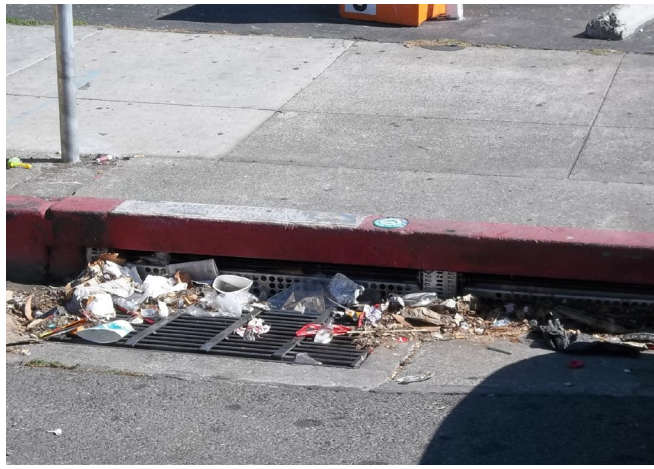
COUNTY OF SAN MATEO



Preventing Stormwater Pollution

Pet Care

Did you know that one gram of dog waste contains 23 million fecal bacteria?
Pet waste that doesn't get picked up can ultimately end up in our waterways.



Litter Prevention

Over time, small amounts of litter on our roads, sidewalks, and trails build up and contribute to a big water quality problem.



Whether at home, in your community, or place of work—there are many ways YOU can help prevent stormwater pollution!

For more information: <https://www.flowstobay.org/preventing-stormwater-pollution>



Be
Sewer
Smart!

AVOID SEWER BACKUPS AND OVERFLOWS BY KEEPING TRASH OUT OF YOUR TOILET

The diagram shows a toilet on the left with blue liquid overflowing from the bowl. A large grey sewer pipe extends from the toilet. A large green mass labeled 'CLOG' is shown inside the pipe. Dotted lines connect various items to the clog:

- Tampons, maxi pads & their applicators/wrappers
- Cotton swabs & makeup pads
- Kitty litter
- Syringes
- Paper towels and shop towels
- Diapers
- Dental floss
- Plastics and food wrappers
- Condoms and their wrappers
- Hair
- Prescription and OTC medications

Did you know?
Cleaning wipes, baby wipes and facial wipes are one of the biggest causes (or contributors) to sewer back-ups in the County of San Mateo Sewer Districts. That's right- even if the package says "flushable" or "disposable", they should NEVER be flushed. They belong in the trash.

Flush ONLY toilet paper. Put trash in the trash can.
For more information please visit our website at www.smcgso.org/sewers or call us at 650-343-4100.

Used prescription drugs and/or the counter medicines should be dropped off in confidential containers at Police Departments at www.smchealth.org



The toilet is only meant
to flush the three P's—
pee, poop and paper.
toilet



QUESTIONS?

Department of Public Works
website: www.smcgov.org/publicworks

COUNTY OF SAN MATEO

