

# Quarterly Post-Release Community and Mandatory Supervision Update

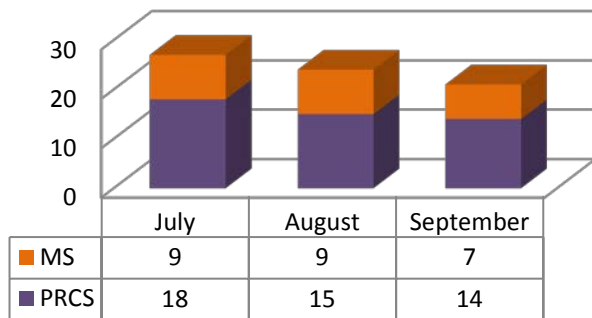
## July-September 2014: 72 New Supervisees

\*since realignment began in October 2011, there have been one thousand and forty-six (1046) supervisees

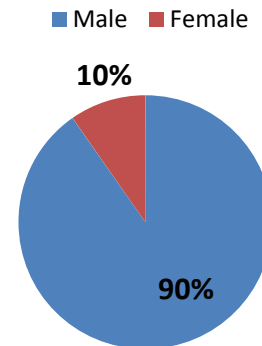
### FY 2014-15 First Quarter Highlights and Year-to-Date (YTD) totals:

- 72 new supervisees
- PRCS supervisees outnumbered MS supervisees
- 26% of supervisees live out of county (YTD: 29% )
- 49 revocations were filed (YTD: 252)
- 14% of violations were property crimes (YTD: 14%)
- 64% of terminations were successful (YTD: 59%)

### PRCS and MS Released to SMC Supervision

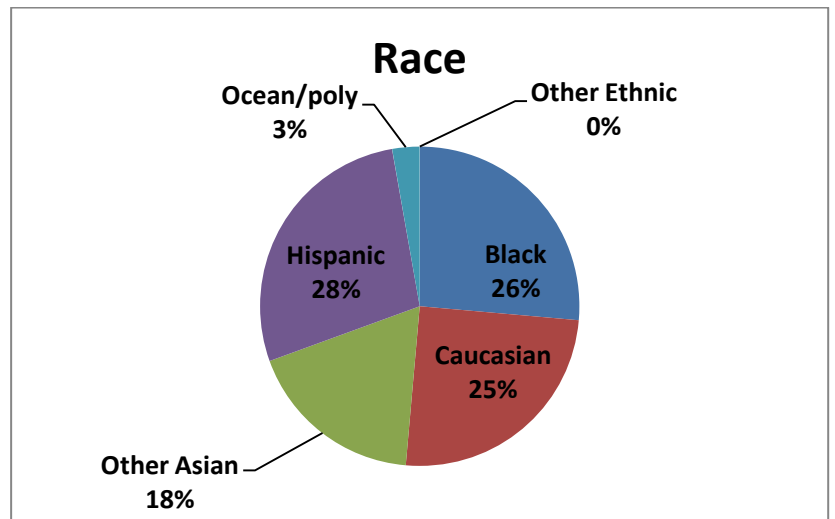


### Gender

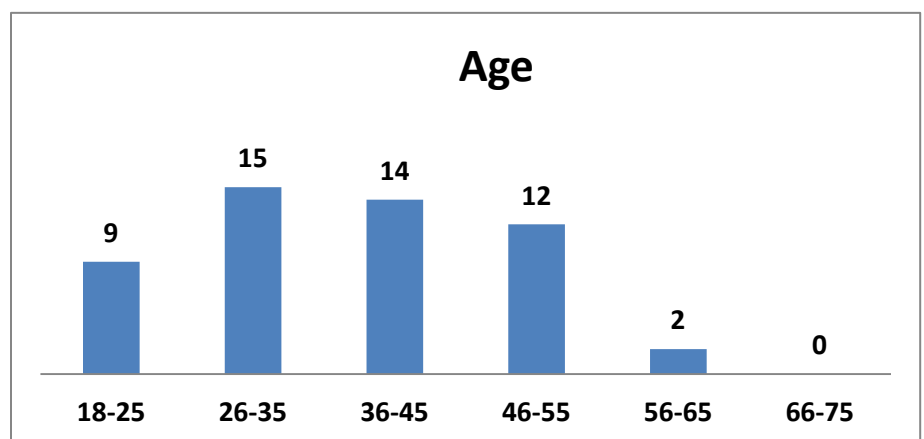


City of Residence	# of Supervisees
Redwood City	12
East Palo Alto	6
Daly City	5
San Mateo	3
Menlo Park	2
S. San Francisco	2
San Bruno	2
Belmont	1
Moss Beach	1
Brisbane	1
Woodside	1
Milbrae	1
Burlingame	1
Pacifica	1
Transient	14
<b>Out of County</b>	<b>19</b>

Out of County	# of Supervisees
San Francisco County	9
Santa Clara County	2
Alameda County	2
Other County in State	6



### Age



## Terminations, Revocations and Flashes

There were forty-four (44) terminations during the reporting period. Over half of them at sixty-four percent (64%) were successful.

Total # of Supervisees Successfully Terminated		Total # of Supervisees Unsuccessfully Terminated	
<b>PRCS – 18</b> • Early Terminations: 9 • Normal Terminations:9	<b>MS – 10</b> • Normal Termination: 10	<b>PRCS – 4</b>	<b>MS – 12</b>

In the reporting period, we filed a total of forty-nine (49) revocations. Of those, nineteen(19) were PRCS revocations and thirty (30) were MS revocations. The breakdown by violation category is below:

Violation Type	PRCS	MS	Percent of Violations
Property	4	3	14%
Drug/Alcohol	6	6	24%
Crimes Against Persons	1	0	53%
Technical	5	21	2%
Other Crimes	3	0	6%
<b>TOTAL</b>	<b>19</b>	<b>30</b>	<b>100%</b>

Generally, the population is reoffending by committing crimes similar to those for which they are on Realignment, namely non-serious, non-violent, non-serious sex related crimes.

Forty-one percent (41%) of the revocations filed were for new law violations involving crimes against persons, property and drug/alcohol related crimes. More than half of the revocations filed, at fifty-three percent (53%) were for for technical violations,an increase when compared to the previous quarter. Technical violations of supervision are filed when supervisees absconde or fail to abstain from substance use. A very small percentage involves other crimes such as robbery, battery, criminal threats and/or evading a peace officer.

There were twenty-three (23) flashes during this reporting period.

# Quarterly Post-Release Community and Mandatory Supervision Update

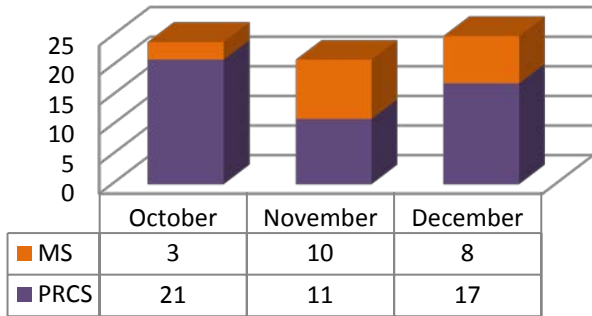
## October – December 2014: 70 New Supervisees

\*since realignment began in October 2011, there have been one thousand one hundred and sixteen (1116) supervisees

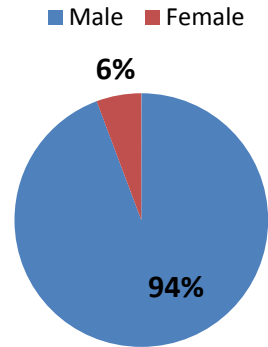
### FY 2014-15 Second Quarter Highlights and Year-to-Date (YTD) totals:

- 70 new supervisees
- PRCS supervisees outnumbered MS supervisees
- 31% of supervisees live out of county (YTD: 30% )
- 42 revocations were filed (YTD: 294)
- 19% of violations were property crimes (YTD: 17%)
- 41% of terminations were successful (YTD: 50%)

### PRCS and MS Released to SMC Supervision



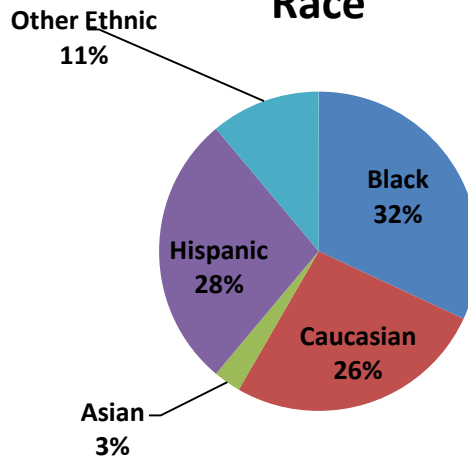
### Gender



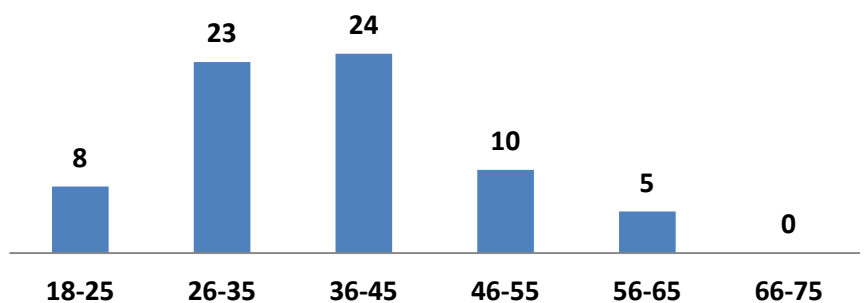
City of Residence	# of Supervisees
Redwood City	8
East Palo Alto	8
San Mateo	6
San Bruno	4
S. San Francisco	3
Foster City	2
Pacifica	2
Daly City	1
Menlo Park	1
San Carlos	1
Transient	12
<b>Out of County</b>	<b>22</b>

Out of County	# of Supervisees
San Francisco County	13
Alameda County	3
Sacramento County	2
Other County in State	3
Other State (Nevada)	1

### Race



### Age



## Terminations, Revocations and Flashes

There were forty-four (44) terminations during the reporting period. Fifty-nine percent (59%) were successful. In December, 6 supervisees were terminated unsuccessfully due to Prop 47.

Total # of Supervisees Successfully Terminated		Total # of Supervisees Unsuccessfully Terminated	
<b>PRCS – 15</b> • Early Terminations: 5 • Normal Terminations: 10	<b>MS – 3</b> • Normal Termination: 3	<b>PRCS – 14</b> • Prop 47: 6	<b>MS – 12</b>

In the reporting period, we filed a total of forty-two (42) revocations. Of those, twenty-three (23) were PRCS revocations and nineteen (19) were MS revocations. The breakdown by violation category is below:

Violation Type	PRCS	MS	Percent of Violations
Property	4	4	19%
Drug/Alcohol	2	4	14%
Crimes Against Persons	5	2	17%
Technical	11	8	45%
Other Crimes	1	1	5%
<b>TOTAL</b>	<b>23</b>	<b>19</b>	<b>100%</b>

Generally, the population is reoffending by committing crimes similar to those for which they are on Realignment, namely non-serious, non-violent, non-serious sex related crimes.

Fifty-five percent (55%) of the revocations filed were for new law violations involving crimes against persons, property and drug/alcohol related crimes. Forty-five percent (45%) were for technical violations, a decrease when compared to the previous quarter. Technical violations of supervision are filed when supervisees abscond or fail to abstain from substance use. A very small percentage involves other crimes such as robbery, battery, criminal threats and/or evading a peace officer.

There were twenty-five (25) flashes during this reporting period.

## AB109 In-Custody Monthly–July 2014

### PC 1170(h): 35 cases

	This Month (Jul 2014)	Year Ago (Jul 2013)	Last Month (Jun 2014)	This Year Total (Oct '13-Sep '14)	2nd Year Total (Oct '12-Sep '13)	1st Year Total (Oct '11-Sep '12)
Number of sentenced cases	35	30	21	273	350	220
Total days to be served	8,726	4,002	3,938	54,772	57,645	34,773
Non-PC1170 total days to be served	8,972	9,797	7,414	77,241	108,014	65,649*
Percent increase in sentenced days due to PC1170	97%	41%	53%	71%	53%	53%*

*\* Figures marked by asterisk do not include days served by self-surrenders entering custody*

35 inmates (31 men, 4 women) were sentenced to the County jail under PC 1170(h) during July. After credits, these inmates are expected to serve a total of 8,726 days, or on average 249 days each. 11 (31%) of these inmates have split sentences, all 11 were men.

For comparison, 168 persons (including self-surrenders) were sentenced to terms in the San Mateo County jail exclusive of the PC 1170(h) cases. After credits, these inmates are expected to serve a total of 8,972 days, or on average 53 days each.

**Mandatory Supervision Revocations:** In July, 2 mandatory supervisees were revoked and terminated. They are expected to serve a total of 67 days, or an average of 34 days each. (These numbers are not reflected in the above 1170(h) table.)

### Post-Release Community Supervision: 19 cases

There were 19 new local PRCS bookings in July. 13 inmates were booked on a new flash incarceration (PC3454) and served a total of 85 days or 6.5 days on average; and 6 inmates were booked on a local PRCS revocation (PC3455). During the month of July cumulatively a total of 51 inmates spent time in custody on PRCS charges for a total of 1,002 days.

### Parole Revocation: 10 cases

There were 10 parole revocation hearings in July. 10 inmates were given revocation sentences and are expected to serve a total of 393 revocation days in custody, or on average 39 days each. The cumulative total of revocation hearings since October 2013 is 70 cases which are expected to serve a total of 2,899 days.

As of July 1, 2013, responsibility for the adjudication of parole violations moved from the Board of Parole to the courts. As a result, Parole will defer to the DA if the defendant has an on-view case and a 3056 hold by dropping their hold. \*\*Since this change became effective there has been a decrease in the Parole revocation sentences and hearings.

### AB109 Totals

AB109 Stats	Current Year (Oct '13-Sep '14)				Prior Year (Oct '12-Sep '13)	
	Cases Since 10/1/13	Days in Custody	In Custody 7/31/14	% of Population 7/31/14	No. of Cases	Days in Custody
PC1170(h)	273	54,772	156	14.8%	350	57,645
PC3056 revocations	70	2,899	12	1.1%	429	12,701
PRCS	224	9,647	31	2.9%	295	10,587
<b>Total AB109</b>	<b>567</b>	<b>67,318</b>	<b>199</b>	<b>18.8%</b>	<b>1,074</b>	<b>80,933</b>

### AB109 Grand Totals Since October 2011

	No. of Cases	Days in Custody	Avg. Length of Stay
PC1170(h)	722	125,098	173 days
PC3056 revocations	1,092	36,189	33 days
PRCS	707	24,518	35 days
MS Revocations	80	3,808	48 days
<b>Total AB109</b>	<b>2,642</b>	<b>207,897</b>	<b>79 days</b>

## AB109 In-Custody Monthly–August 2014

### PC 1170(h): 19 cases

	This Month (Aug 2014)	Year Ago (Aug 2013)	Last Month (Jul 2014)	This Year Total (Oct '13-Sep '14)	2nd Year Total (Oct '12-Sep '13)	1st Year Total (Oct '11-Sep '12)
Number of sentenced cases	19	43	35	292	350	220
Total days to be served	3,676	6,715	8,726	58,448	57,645	34,773
Non-PC1170 total days to be served	6,388	8,536	8,972	83,629	108,014	65,649*
Percent increase in sentenced days due to PC1170	58%	79%	97%	70%	53%	53%*

*\* Figures marked by asterisk do not include days served by self-surrenders entering custody*

19 inmates (18 men, 1 woman) were sentenced to the County jail under PC 1170(h) during August. After credits, these inmates are expected to serve a total of 3,676 days, or on average 193 days each. 6 (32%) of these inmates have split sentences, all 6 were men.

For comparison, 154 persons (including self-surrenders) were sentenced to terms in the San Mateo County jail exclusive of the PC 1170(h) cases. After credits, these inmates are expected to serve a total of 6,388 days, or on average 41 days each.

**Mandatory Supervision Revocations:** In August, 2 mandatory supervisees were revoked and terminated. They are expected to serve a total of 74 days, or an average of 37 days each. (These numbers are not reflected in the above 1170(h) table.)

### Post-Release Community Supervision: 22 cases

There were 22 new local PRCS bookings in August. 11 inmates were booked on a new flash incarceration (PC3454) and served a total of 85 days or 7.7 days on average; and 11 inmates were booked on a local PRCS revocation (PC3455). During the month of August cumulatively a total of 51 inmates spent time in custody on PRCS charges.

### Parole Revocation: 10 cases

There were 10 parole revocation hearings in August. 9 inmates were given revocation sentences and are expected to serve a total of 386 revocation days in custody, or on average 43 days each. The cumulative total of revocation hearings since October 2013 is 80 cases which are expected to serve a total of 3,285 days.

As of July 1, 2013, responsibility for the adjudication of parole violations moved from the Board of Parole to the courts. As a result, Parole will defer to the DA if the defendant has an on-view case and a 3056 hold by dropping their hold. \*\*Since this change became effective there has been a decrease in the Parole revocation sentences and hearings.

### AB109 Totals

AB109 Stats	Current Year (Oct '13-Sep '14)				Prior Year (Oct '12-Sep '13)	
	Cases Since 10/1/13	Days in Custody	In Custody 8/31/14	% of Population 8/31/14	No. of Cases	Days in Custody
PC1170(h)	292	58,448	141	13.7%	350	57,645
PC3056 revocations	80	3,285	10	1.0%	429	12,701
PRCS	246	10,511	26	2.5%	295	10,587
<b>Total AB109</b>	<b>618</b>	<b>72,244</b>	<b>177</b>	<b>17.2%</b>	<b>1,074</b>	<b>80,933</b>

### AB109 Grand Totals Since October 2011

	No. of Cases	Days in Custody	Avg. Length of Stay
PC1170(h)	862	150,866	175 days
PC3056 revocations	1,102	36,575	33 days
PRCS	729	25,382	35 days
<b>Total AB109</b>	<b>2,693</b>	<b>212,823</b>	<b>79 days</b>

## AB109 In-Custody Monthly–September 2014

### PC 1170(h): 33 cases

	This Month (Sep 2014)	Year Ago (Sep 2013)	Last Month (Aug 2014)	This Year Total (Oct '13-Sep '14)	2nd Year Total (Oct '12-Sep '13)	1st Year Total (Oct '11-Sep '12)
Number of sentenced cases	33	21	19	326	350	220
Total days to be served	5,739	3,475	3,676	64,188	57,645	34,773
Non-PC1170 total days to be served	5,582	8,680	6,388	81,797	108,014	65,649*
Percent increase in sentenced days due to PC1170	103%	40%	58%	78%	53%	53%*

*\* Figures marked by asterisk do not include days served by self-surrenders entering custody*

33 inmates (28 men, 5 women) were sentenced to the County jail under PC 1170(h) during September. After credits, these inmates are expected to serve a total of 5,739 days, or on average 174 days each. 17 (52%) of these inmates have split sentences, 14 were men and 3 were women.

For comparison, 153 persons (including self-surrenders) were sentenced to terms in the San Mateo County jail exclusive of the PC 1170(h) cases. After credits, these inmates are expected to serve a total of 5,582 days, or on average 36 days each.

**Mandatory Supervision Revocations:** In September, 4 mandatory supervisees were revoked (1 revoked/reinstated, 3 revoked/terminated). They are expected to serve a total of 490 days, or an average of 123 days each. (These numbers are not reflected in the above 1170(h) table.)

### Post-Release Community Supervision: 25 cases

There were 25 new local PRCS bookings in September: 16 inmates were booked on a new flash incarceration (PC3454) and will serve a total of 88 days in custody or 5.5 days on average; and 9 inmates were booked on a local PRCS revocation (PC3455). During the month of September cumulatively a total of 50 inmates spent time in custody on PRCS charges for a total of 846 days.

### Parole Revocation: 13 cases

There were 13 parole revocation hearings in September. 13 inmates were given revocation sentences and are expected to serve a total of 629 revocation days in custody, or on average 48 days each. The cumulative total of revocation hearings since October 2013 is 93 cases which are expected to serve a total of 3,914 days.

As of July 1, 2013, responsibility for the adjudication of parole violations moved from the Board of Parole to the courts. As a result, Parole will defer to the DA if the defendant has an on-view case and a 3056 hold by dropping their hold. \*\*Since this change became effective there has been a decrease in the Parole revocation sentences and hearings.

### AB109 Totals

AB109 Stats	Current Year (Oct '13-Sep '14)				Prior Year (Oct '12-Sep '13)	
	Cases Since 10/1/13	Days in Custody	In Custody 9/30/14	% of Population 9/30/14	No. of Cases	Days in Custody
PC1170(h)	326	64,188	162	15.6%	350	57,645
PC3056 revocations	93	3,914	18	1.7%	429	12,701
PRCS	270	11,418	31	3.0%	295	10,587
<b>Total AB109</b>	<b>689</b>	<b>79,520</b>	<b>211</b>	<b>20.3%</b>	<b>1,074</b>	<b>80,933</b>

### AB109 Grand Totals Since October 2011

	No. of Cases	Days in Custody	Avg. Length of Stay
PC1170(h)	896	156,606	175 days
PC3056 revocations	1,115	37,204	33 days
PRCS	753	26,289	35 days
<b>Total AB109</b>	<b>2,764</b>	<b>220,099</b>	<b>80 days</b>

## AB109 In-Custody Monthly–October 2014

### PC 1170(h) Cases: 32 cases

	This Month (Oct 2014)		Last Month (Sept 2014)		This Year Total (Oct '14-Sep '15)		Average Annual 2011-2014
Number of new PC1170(h) cases	32		33		32		276 per year
	Straight 24	Split 8	Straight 16	Split 17	Straight 24	Split 8	
	75%	25%	48%	52%	75%	25%	
* Average Length of Stay for PC1170(h) cases	154		174		154		176 days per case
	Straight	Split	Straight	Split	Straight	Split	
	154	174	161	185	154	174	
Non-PC1170(h) sentenced cases	142		153		142		2180 per year
* Average Length of Stay Non-PC1170(h)	48		36		48		40 days per case

*\*Average length of stay is determined after credits are applied*

**Breakdown of PC1170H Sentences:** 22 were men, 10 were women

### Mandatory Supervision Revocation Cases: 8 cases

	This Month (Oct 2014)	Last Month (Sept 2014)	This Year Total (Oct '14-Sep '15)	* Average Annual thru Sept. 2014
Number of Mandatory Supervision Revoc. cases	8	4	8	46 per year
Average Length of Stay	54	123	100	87 days per case

*\*First MS case appeared in December 2012*

### Post-Release Community Supervision: 32 cases

There were a total of 32 new local PRCS bookings in October; 19 were booked on a Flash Incarceration (PC3454) and were in custody during the month a total of 127 days or 6.7 days on average.

13 inmates were booked on a local PRCS revocation (PC3455).

### Parole Revocation: 12 cases

There were 12 parole revocation hearings in October. 12 inmates were given revocation sentences and are expected to serve a total of 644 revocation days in custody, or an average of 54 days each.

### AB109 Totals

AB109 Stats	Current Year (Oct '14-Sep '15)				Prior Year (Oct '13-Sep '14)		2011-2014
	Cases Since 10/1/14	Days in Custody	In Custody 10/31/14	% of Population 10/31/14	No. of Cases	Avg. Length of Stay	Avg. Length of Stay Overall
PC1170(h)	32	5094	163	16.7%	293	203	176
MS Revocations	8	798	17	1.7%	58	93	87
PC3056 revocations	12	644	20	2.1%	93	42	34
PC3454	19	147	5	.5%	170	7	8
PC3455	13	934	32	3.3%	104	80	93
<b>Total AB109</b>	<b>84</b>	<b>7617</b>	<b>237</b>	<b>24.3%</b>	<b>718</b>	<b>115</b>	<b>78</b>



## AB109 In-Custody Monthly–November 2014

### PC 1170(h): 9 cases

	This Month (Nov 2014)		Last Month (Oct 2014)		This Year Total (Oct '14-Sep '15)		Average 2011- 2014
<b>Number of new PC1170(h) cases</b>	9		32		41		276 per year
	Straight	Split	Straight	Split	Straight	Split	
	5	4	24	8	29	12	
	56%	44%	75%	25%	71%	29%	
<b>* Average Length of Stay (ALOS) for PC1170(h) cases</b>	250		159		179		176 days per case
	Straight	Split	Straight	Split	Straight	Split	
	228	278	154	174	166	209	
<b>Non-PC1170(h) sentenced cases</b>	127		142		269		2180 per year
<b>* Average Length of Stay (ALOS) Non-PC1170(h)</b>	34		48		41		40 days per case

*\*ALOS is determined after credits are applied*

**Breakdown of PC1170(h) Sentences:** 6 were men, 3 were women

### Mandatory Supervision Revocation: 2 cases

	This Month (Nov 2014)	Last Month (Oct 2014)	This Year Total (Oct '14-Sep '15)	* Average Annual thru Sept. 2014
<b>Number of Mandatory Supervision Revoc. cases</b>	2	8	10	46 per year
<b>Average Length of Stay</b>	105	54	64	87 days per case

*\*1st MS case appeared in December 2012*

### Post-Release Community Supervision: 20 cases

There were a total of 20 new local PRCS bookings in November; 12 were booked on a Flash Incarceration (PC3454) and were in custody during the month a total of 108 days or 9 days on average. 8 inmates were booked on a local PRCS revocation (PC3455).

### Parole Revocation: 9 cases

There were 9 parole revocation hearings in November. 7 inmates were given revocation sentences and are expected to serve a total of 165 revocation days in custody, or an average of 24 days each.

### AB109 Totals

<b>AB109 Stats</b>	<i>Current Year (Oct '14-Sep '15)</i>				<i>Prior Year (Oct '13-Sep '14)</i>		<i>2011-2014</i>
	Cases Since 10/1/14	Days in Custody	In Custody 11/30/14	% of Population 11/30/14	No. of Cases	Avg. Length of Stay	Avg. Length of Stay Overall
PC1170(h)	41	7,331	151	17.3%	293	203	176
MS Revocations	10	642	12	1.4%	58	93	87
PC3056 revocations	21	809	9	1.0%	93	42	34
PC3454	31	235	2	0.2%	170	7	8
PC3455	21	1,820	24	2.7%	104	80	93
<b>Total AB109</b>	<b>124</b>	<b>10,837</b>	<b>198</b>	<b>22.6%</b>	<b>718</b>	<b>115</b>	<b>78</b>

## AB109 In-Custody Monthly–December 2014

### PC 1170(h): 9 cases

	This Month (Dec 2014)		Last Month (Nov 2014)		This Year Total (Oct '14-Sep '15)		Average 2011-2014
<b>Number of new PC1170(h) cases</b>	9		9		50		276 per year
	Straight	Split	Straight	Split	Straight	Split	
	5	4	5	4	34	16	
	56%	44%	56%	44%	68%	32%	
<b>* Average Length of Stay (ALOS) for PC1170(h) cases</b>	205		250		184		176 days per case
	Straight	Split	Straight	Split	Straight	Split	
	221	186	228	278	174	203	
<b>Non-PC1170(h) sentenced cases</b>	114		127		383		2180 per year
<b>* Average Length of Stay (ALOS) Non-PC1170(h)</b>	34		34		39		40 days per case

*\*ALOS is determined after credits are applied*

**Breakdown of PC1170(h) Sentences:** 6 were men, 3 were women

**Proposition 47 Resentences:** 14 individuals originally sentenced under PC1170(h) were re-sentenced under Proposition 47 (13 of the 14 were inmates were serving custody time and 1 individual was on Mandatory Supervision). As a result, the proportion of inmates in custody under PC1170(h) dropped from 16.2% to 14.6%. All realigned inmates in custody as of December 31, decreased from 20.1% to 18.4%.

### Mandatory Supervision Revocation: 3 cases

	This Month (Dec 2014)	Last Month (Nov 2014)	This Year Total (Oct '14-Sep '15)	*Average Annual thru Sept. 2014
<b>Number of Mandatory Supervision Revoc. cases</b>	3	2	13	46 per year
<b>Average Length of Stay</b>	41	105	59	87 days per case

*\*1st MS case appeared in December 2012*

### Post-Release Community Supervision: 15 cases

There were a total of 15 new local PRCS bookings in December; 9 were booked on a Flash Incarceration (PC3454) and were in custody during the month a total of 91 days or 10 days on average.

6 inmates were booked on a local PRCS revocation (PC3455).

### Parole Revocation: 11 cases

There were 11 parole revocation hearings in December. 9 inmates were given revocation sentences and are expected to serve a total of 399 revocation days in custody, or an average of 44 days each.

### AB109 Totals

<b>AB109 Stats</b>	<i>Current Year (Oct '14-Sep '15)</i>				<i>Prior Year (Oct '13-Sep '14)</i>		<i>2011-2014</i>
	Cases Since 10/1/14	Days in Custody	In Custody 12/31/14	% of Population 12/31/14	No. of Cases	Avg. Length of Stay	Avg. Length of Stay Overall
PC1170(h)	50	9,176	119	14.6%	293	203	176
MS Revocations	13	765	8	1.0%	58	93	87
PC3056 revocations	32	1,208	10	1.2%	93	42	34
PC3454	40	326	2	0.2%	170	7	8
PC3455	27	2,277	11	1.4%	104	80	93
<b>Total AB109</b>	<b>162</b>	<b>13,752</b>	<b>150</b>	<b>18.4%</b>	<b>718</b>	<b>115</b>	<b>78</b>

**Service Connect Dashboard, FY 14-15, Q1 & Q2 (July 2014 – December 2014)**

## New Intakes

As anticipated, we have seen an upward trend in the number of new intakes with the inclusion of the Unified Reentry population at the start of the fiscal year. We have also seen an increase in the number of PRCS intakes during the second quarter of this year.

## Benefits Enrolled

Service Connect has seen an increase in overall applications for benefits enrollment coinciding with the increase in new Unified Reentry participants. Additionally, we saw an increase in Medi-Cal applications resulting from the Covered California open enrollment period, which occurred during the second quarter. We anticipate seeing increases in Cal Fresh applications in accordance with the passage of Proposition 47, which increases eligibility for individuals previously denied for certain drug felonies.

## Employment Services – 550 Jobs!

HSA continues to see strong rates of job placement for participants in the 550 Jobs! Employment program (as previously mentioned, the number of job placements can be greater than the number of new referrals during the reporting period, as the job placements reported are not only for those newly referred to the program). As has been consistent in past quarters, over half of those gaining employment have been placed in community employment. Early in the second quarter, the County renewed its contract with Job Train and the Department of Transportation to support employment opportunities in the Caltrans Litter Abatement programs. The program has received two referrals from Service Connect in the second quarter.

## Services Provided to Clients

Service Connect has seen an overall increase in most distribution of vouchers from the first quarter to the second quarter, which we anticipated due to the overall increase client numbers. Regarding emergency housing, it should be noted that in this report, we've changed how the motel vouchers and shelter beds are reported. Previously, the number of *referrals* to emergency housing was reported, each referral potentially covering multiple nights. Moving forward, we will report the actual *number of nights* stayed in both emergency motel and emergency shelter housing to more accurately depict service usage.

## Family Re-Engagement

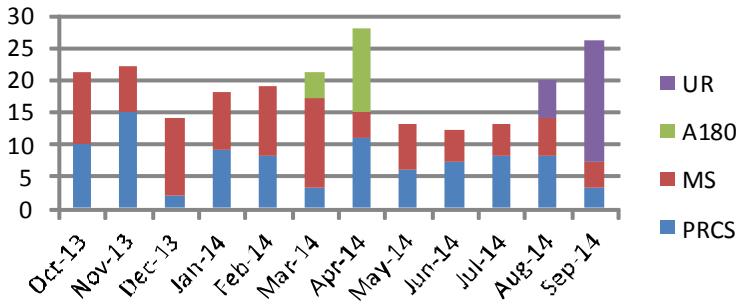
During the first half of the fiscal year, Family Re-Engagement activities included a picnic at San Mateo's Music in the Park, a Halloween pumpkin carving activity, and a Thanksgiving turkey giveaway, among other events. One client described Q2's Halloween activity as "therapeutic and fulfilling...For one moment, on that day, I felt like I was a part of one big family." Service Connect family events continue to foster opportunities for clients to engage families in wholesome activities with their families and promote hope and fellowship among supportive peers.

## Peer Support/Groups

Service Connect groups continue to be a cornerstone of the reentry service model, providing encouragement and engaging people for positive change. In October 2014, Service Connect added a 7-session Life Skills group, including topics such as stress management, conflict resolution, and budgeting. The group was well received by clients and we expect to host a new Life Skills series in Spring 2015.

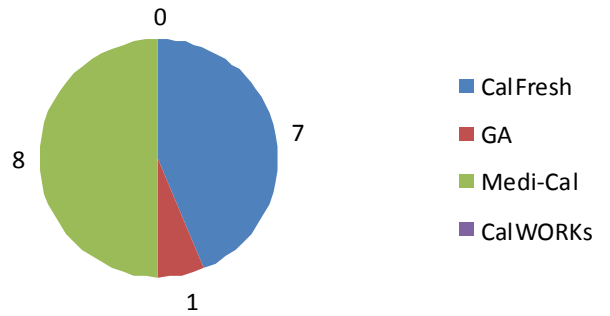
Service Connect continues to have a strong peer support component to services. Of the 83 individuals referred for peer mentorship during the first two quarters, 58 (70%) have made a connection and are working with a mentor.

**New Intakes\***  
Oct 2013 - Sept 2014

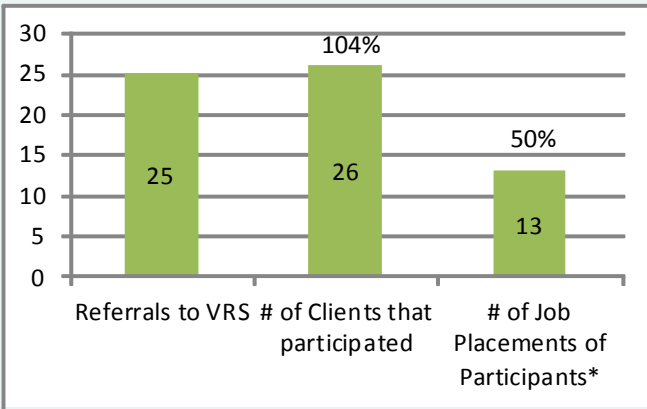


\*New intakes over the last 12 months

**Benefits Enrolled**



**Employment Services- 550 Jobs!**



**Job Placements**

9 of 26	Placed in Community Employment
4 of 26	Placed in Offsite Training Programs (SBR, REEP, Caltrans)

\*Participants may not be placed in jobs during the month of referral; placement numbers roll over to next month

**Services Provided to Clients**



**338 Motel Voucher Nights**

**223 Shelter Bed nights**



**75 Food Gift Cards**

**14 Food Totes**



**141 Monthly Pass**

**720 Single Tickets**



**83 Clothing Vouchers**

**Family Reunification**



Family Re-Engagement Events	1
Community Outreach Events	1

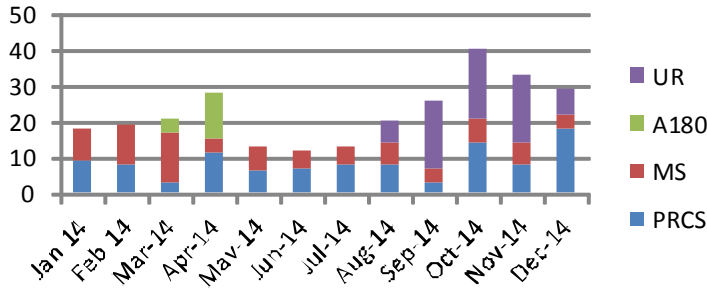
**Peer Support/Groups**



Support Groups held	28
Moral Reconciliation Therapy participants	30*
Moral Reconciliation Therapy Graduates	9*
Individuals connected to Peer Mentors	24

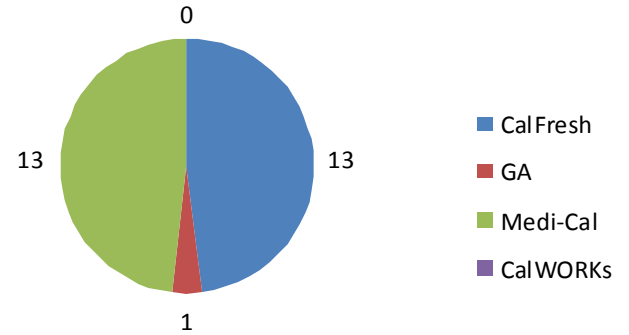
\* Data is cumulative from Oct 2011

**New Intakes\***  
Jan 2014 - Dec 2014

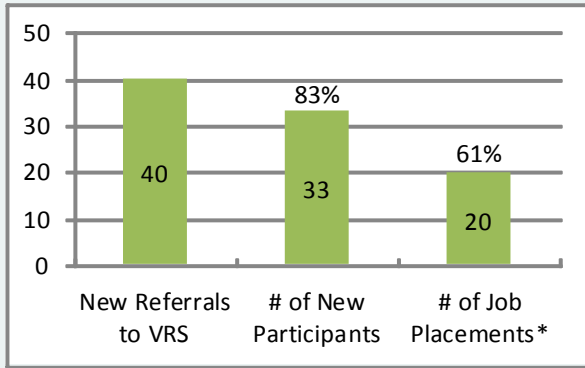


\*New intakes over the last 12 months

**Benefits Enrolled**



**Employment Services- 550 Jobs!**



**Job Placements**

13 of 33	Placed in Community Employment
7 of 33	Placed in Offsite Training Programs (SBR, REEP, Caltrans)

\*Participants may not be placed in jobs during the month of referral; placement numbers roll over to next month

**Services Provided to Clients**



**526 Motel Voucher Nights**  
**299 Shelter Bed Nights**



**121 Food Gift Cards**  
**39 Food Totes**



**135 Monthly Pass**  
**888 Single Tickets**



**123 Clothing Vouchers**

**Family Re-Engagement**



Family Re-Engagement Events	3
Community Outreach Events	0

**Peer Support/Groups**



Support Groups held	33
Moral Reconciliation Therapy participants	37*
Moral Reconciliation Therapy Graduates	10*
Individuals connected to Peer Mentors	34

\* Data is cumulative from Oct 2011

**REPORT ON AB109 FROM HEALTH SERVICES  
JANUARY 29, 2015**

**What is the flow of inmates at Correctional Health Services?**

	<b>FY 14/15 Q2</b>	<b>YTD</b>
<b>Clients Referred to CHS</b>	120	219
<b>MH Needs Assessment</b>	120	199
<b>AOD Needs Assessment</b>	120	199
<b>Assessed Clients Referred to Service Connect</b>	98	167
<b>Medical Referrals*</b>	66	127
<b>Referrals to Other Services*</b>	131	225

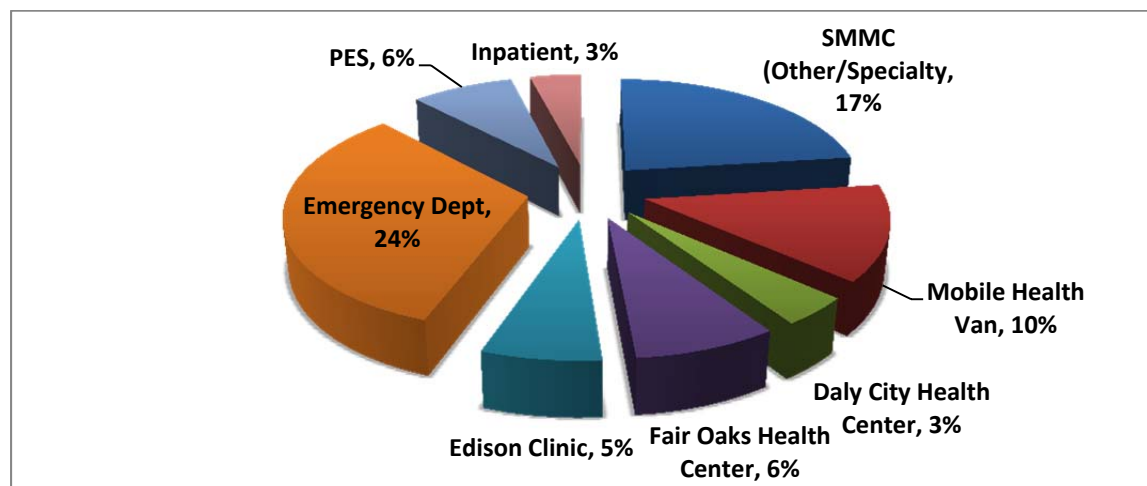
\*Many clients receive referrals to multiple services

**What is the flow of clients at Service Connect?**

	<b>FY 14/15 Q2</b>	<b>YTD</b>
<b>New Clients*</b>	70	104
<b>BHRS Screen</b>	93%	94%
<b>Medical Screening</b>	93%	95%
<b>Formal AOD Assessment</b>	27%	30%
<b>Formal MH Assessment</b>	19%	24%
<b>AOD Referral</b>	74%	82%

\*Admitted clients who agreed to receive assessment services

**What medical services are provided to Service Connect clients by SMMC (FY 14-15 Q2)?**



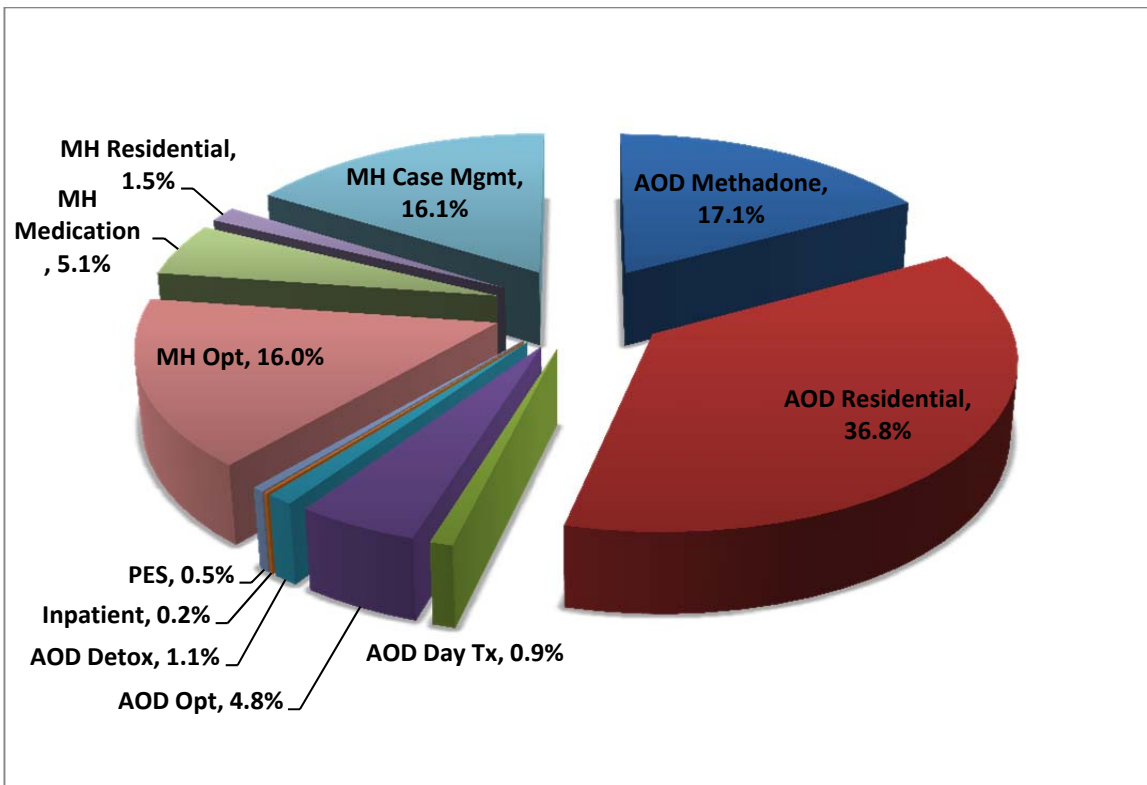
**How many clients admitted to Service Connect are served by BHRS?**

<b>Year Admitted to Service Connect</b>	<b>Service Connect Team</b>	<b>Other AOD Services</b>	<b>Other MH Services</b>	<b>Total Served by BHRS</b>
<b>Total Since 10/11 (N = 915)</b>	402	242	138	484
<b>FY 14/15 Q2 (N = 88)</b>	88	27	21	88
<b>FY 14/15 YTD (N = 146)</b>	137	50	39	140
<b>FY 13/14 (N = 362)</b>	193	118	84	196
<b>FY 12/13 (N = 287)</b>	100	84	54	132
<b>FY 11/12 (N = 120)</b>	52	35	35	66

**How many services are Service Connect clients receiving through BHRS?**

<b>Year Admitted to Service Connect</b>		<b>Service Connect Team</b>	<b>Other AOD Services</b>	<b>Other MH Services</b>	<b>Total Services</b>	<b>Percent Engaged (≥ 4 Serv.)</b>
<b>Overall (N = 915)</b>	<b>Number</b>	4,105	23,122	10,084	37,311	74%
	<b>Average</b>	8.5	80.6	47.6	65.3	
<b>FY 14/15 Q2 (N = 88)</b>	<b>Number</b>	478	895	759	2,132	62%
	<b>Average</b>	5.4	33.1	36.1	24.2	
<b>FY 14/15 YTD (N = 146)</b>	<b>Number</b>	944	4,250	1,273	6,467	60%
	<b>Average</b>	6.9	85.0	32.6	47.2	
<b>FY 13/14 (N = 362)</b>	<b>Number</b>	1,673	11,052	3,766	16,941	72%
	<b>Average</b>	8.7	93.7	44.8	74.6	
<b>FY 12/13 (N = 287)</b>	<b>Number</b>	1,032	5,176	2,187	8,395	74%
	<b>Average</b>	10.3	61.6	40.5	57.9	
<b>FY 11/12 (N = 120)</b>	<b>Number</b>	456	2,644	2,858	5,598	78%
	<b>Average</b>	8.8	75.5	81.7	87.6	

What behavioral health services are provided to Service Connect clients by BHRS (FY 14-15 YTD)?



What are the outcomes of services provided to Service Connect clients?

Year Admitted to Service Connect	Successful Completion of AOD Tx*	Visits to PES	Inpatient Days
FY14/15 Q2 (N = 88)	47% (n = 15)	30 (.6%)	3 (.1%)
FY 14/15 YTD (N = 146)	59%	46 (.5%)	15 (.2%)
FY 13/14 (N = 362)	64%	45 (.3%)	91 (.7%)
FY 12/13 (N = 287)	NA	49 (.7%)	16 (.2%)
FY 11/12 (N = 120)	NA	45 (4%)	15 (1%)

\*Based on 3 consecutive negative urine screens and achievement of treatment goals